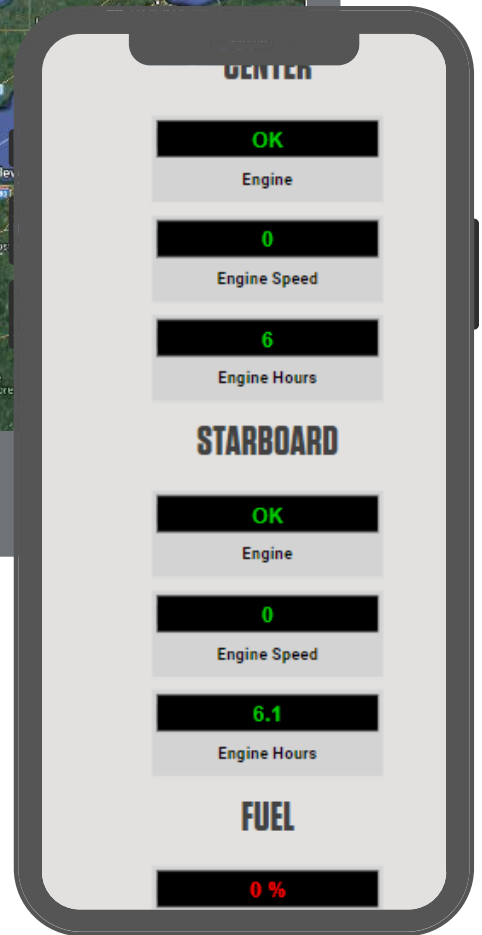
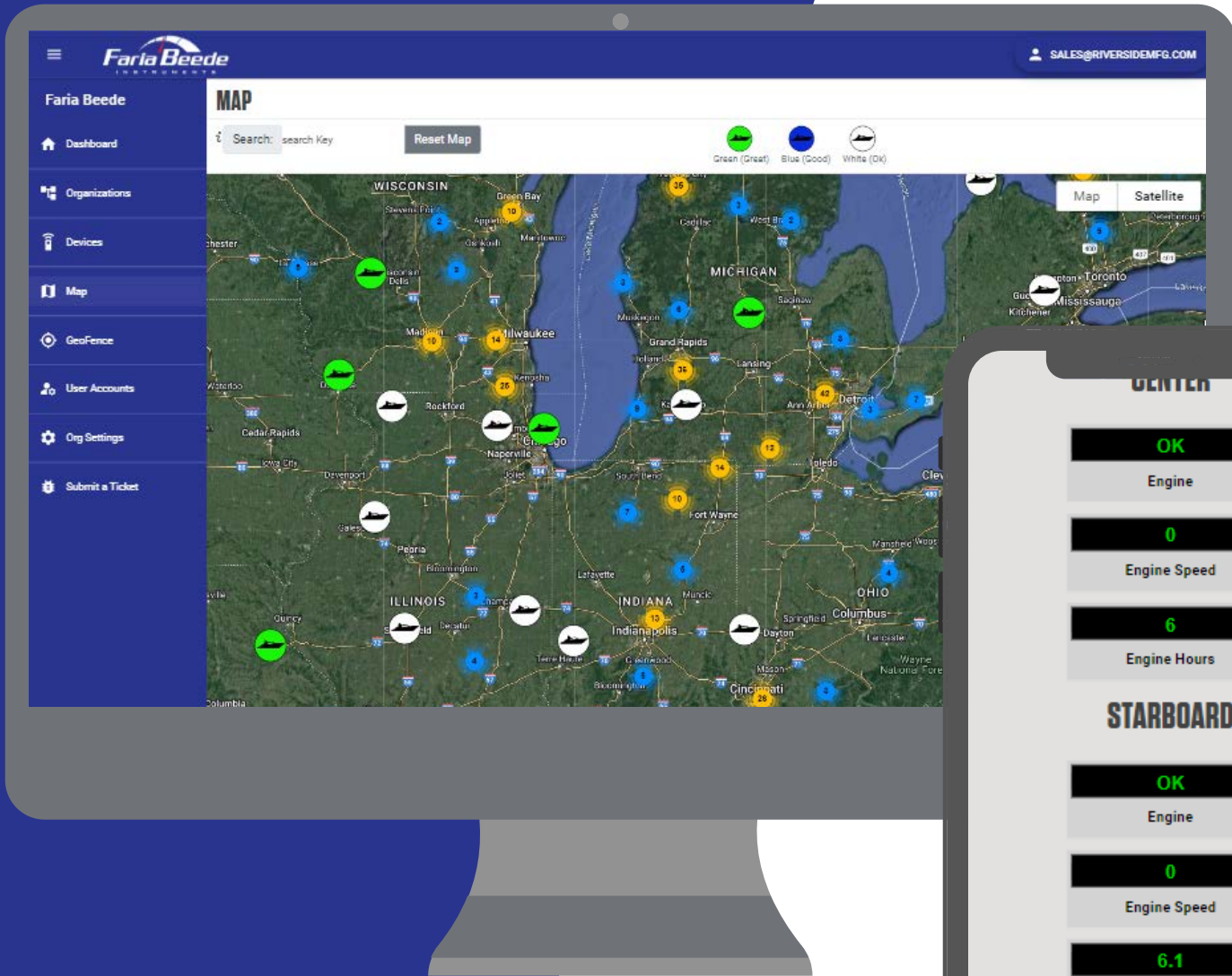


SENTRY

WD500



20+ YEARS
OF BOAT
SECURITY
AND
MONITORING





SENTRY

WD500

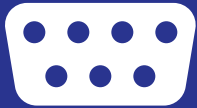


HARDWARE



WIRELESS

- Cellular (LTE, CAT-M1)
- GNSS (GPS, GLONASS)
- Bluetooth (BLE)
- Internal Antennas



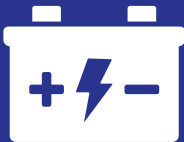
SERIAL

- (2) CAN Bus
- RS-232



ADDITIONAL I/O

- Status LEDs
- (3) Analog Inputs
- (7) Switched Inputs
- (3) Switched Outputs



POWER

- 12 VDC or 24 VDC System Compatible
- Internal Battery (5000 mAh)
- Battery Disconnect @ 11.6VDC (reconnects @ 13.5VDC)



260-637-4470

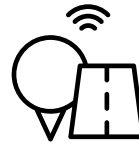


14510 LIMA RD
FORT WAYNE, IN, USA 46818



WWW.RIVERSIDEMFG.COM

TELEMATICS FEATURES



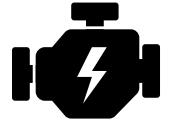
REPORT MONITORING

2min position & engine reports, 3hr position report at rest.



GEOFENCING

Create unique boundaries.



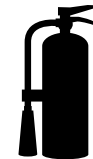
ENGINE MONITORING

Compatible with Smartcraft®, NMEA2k, & J1939.



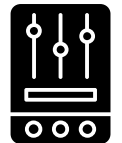
BLIGE MONITORING

Monitor bilge pumps & levels.



CRITICAL SYSTEMS

Monitor fire extinguisher/other critical systems.



CAN2

Monitor CAN traffic for customizable features.



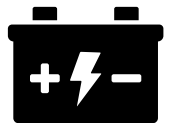
SECURITY

Vessel and engine safety.



HIBERNATION

Interval reporting during storage.



BATTERY BACKUP

Integrated & independent power supply, 24/7/365 reporting.





SENTRY

WD500



WIRELESS

CELLULAR	LTE CAT-M1 / GSM / GPRS Status LED (Amber)
GNSS	GPS, GLONASS, Location Accuracy: ~2.0m CEP Open Sky Status LED (Green)
BLUETOOTH	BLE 5.0
REGULATORY	CE / FCC / PTCRB ACMA (Australian Communications and Media Authority)

SERIAL COMMUNICATION

CAN Bus 1	Data rates up to 1 Mbps, ESD, Protection: ±16 kV, Status LEDs (Blue / Red - DTC), Optional: Isolated CAN, Transceiver (ISO1050)
CAN Bus 2	Data rates up to 1 Mbps, Status LED (Blue), ESD Protection: ±16 kV
RS-232	Data rates up to 250 kbps ESD Protection: ±15 kV

ELECTRICAL

OPERATING VOLTAGE	9.5-32 VDC (135 VDC startup, Status LED (Red))
POWER CONSUMPTION	100 mA (Running), 50 mA (Sleep), 15 mA (Deep Sleep)
BATTERY CAPACITY	5000 mAh

ENVIRONMENTAL

OPERATING TEMPERATURE	-40° to 85° C (without LiPo Battery installed), -20° to 60° C (with LiPo Battery Installed)
HUMIDITY	5% to 98% (non-condensing)
SHOCK	MIL-STD-202, Method 213
WATER INTRUSION	IP67
SALT FOG	ASTM B117-73
CHEMICAL EXPOSURE	Withstands exposure to: Engine Coolant, Gasoline, Hydraulic fluid, Power Steering Fluid, Engine Oil
RoHS & REACH	Compliant
REGULATORY	SAE J1171

INPUTS/OUTPUTS

ANALOG INPUTS	Input Power (0 to 30 ± 0.2 VDC) 3 additional inputs (0 to 30 ± 0.2 VDC)
DISCRETE INPUTS	5 Active High Inputs (>5 VDC) 2 Active Low Inputs (Open/Ground)
DISCRETE OUTPUTS	3 Sinking Outputs (200 mA max.) *One output is latching, which maintains the output state during hibernation (power removed)

