

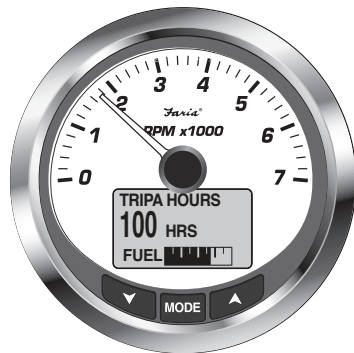


**Quick Reference Guide**

Your MG3000 Instrument Package comes equipped with factory recommended settings and displays. Basic Initialization is necessary for the system to perform properly, please reference the Owner's Manual for additional information. You can download the Owner's Manual at;

[www.FariaBeede.com/manuals](http://www.FariaBeede.com/manuals)

Note: Some functions may not be present in your version of the MG3000 program. Engine and Boat manufactures have the ability to customize the program to fit their build requirements. If you are looking for a feature listed in the Appendix and your MG does not show the function required please consult your Engine and Boat manufacturer's User manual.



**Silence Alarms**

To silence an alarm, press the **MODE** button on the tachometer. For additional information and a possible solution, reference your User's manual. If multiple alarms are present the display will automatically scroll through the current alarm(s) messages. Alarm messages will be stored internally for later troubleshooting if required. All current alarms will be shown while in Normal Mode by scrolling.

**Menu Operations**

**Scrolling - Normal Operating Mode**

▼ ▲ The "Up" or "Down" buttons will scroll through active displays.

**Making a Selection**

**MODE** Press the "MODE" button for longer than one second to make a selection.

**Exiting a Menu**

**MODE** A short press of the "MODE" button for less than 1 second will exit from a menu. 15 seconds of inactivity will exit.

**Edit Menu**

**MODE** From the "Normal" mode press the "MODE" once to view the menus.

▼ ▲ The "Up" or "Down" button will scroll through the available options.

**MODE** Press the "MODE" button for longer than one second to make a selection.

**Adding Fuel to the Fuel Tank**

**MODE** From the "Normal" mode, press the "MODE" once to view the menus.

▼ ▲ The "Up" or "Down" button will scroll through the available options to FUEL LEVEL menu.

**MODE** Press the "MODE" button for longer than one second to make a selection.

▼ ▲ Use the "Up" or "Down" button to select the Fuel tank that fuel has been added to.

**MODE** Press the "MODE" button for longer than one second to make a selection.

▼ ▲ Set tank Full or select ADD FUEL and use the "Up" or "Down" button to set the volume of Fuel that has been added to the fuel tank.

**MODE** Press the "MODE" button for longer than one second to make a selection.

Pressing and holding the UP or DOWN button will increase or decrease the amount in a more rapid fashion.

**Brightness Adjustment (TACH only)**

**MODE** From the "Normal" mode press the "MODE" button once.

▼ ▲ Scroll until "LIGHTING" is selected.

**MODE** Press the "MODE" button for longer than one second to make a selection.

Select "ADJUST DIAL" to adjust all instruments' lighting levels.  
OR  
Select "ADJUST LCD" to adjust the Tachometer and Speedometer's display brightness.

▼ ▲ Press the "Up" or "Down" button to increase or decrease lighting level.

**MODE** Press the "MODE" button for longer than one second to make a selection.

**Contrast Adjustment (TACH only)**

**MODE** Press the "MODE" button once.

▼ ▲ Scroll until "CONTRAST" is selected

**MODE** Press the "MODE" button for longer than one second to make a selection.

▼ ▲ Press the "Up" or "Down" button to increase or decrease the contrast in the Tachometer and Speedometer's display.

**MODE** Press the "MODE" button for longer than one second to make a selection.

**Trip Data View/Reset (TACH only)**

▼ ▲ From the "Normal" mode hold the "Up" and "Down" buttons for 1 second

▼ ▲ Scroll to "TRIP A", "TRIP B" or "SEASON"

**MODE** Press the "MODE" button for longer than one second to make a selection.

▼ ▲ Scroll to "VIEW" or "RESET DATA"

**MODE** Press the "MODE" button for longer than one second to make a selection.

**Reset Fuel Totalizer (TACH only)**

**MODE** Press the "MODE" button once.

▼ ▲ Select "RESET TFUEL"

**MODE** Press the "MODE" button for longer than one second to make a selection.

▼ ▲ Select YES to reset totalizer fuel used.

**MODE** Press the "MODE" button for longer than one second to make a selection.

**Software Revision**

**MODE** From the EDIT MENU press the "MODE" once to view the menus.

▼ ▲ The "Up" or "Down" button will scroll through the available options to select SYSTEM MENU.

**MODE** Press the "MODE" button for longer than one second to make a selection.

▼ ▲ The "Up" or "Down" button will scroll through the available options to SOFTWARE.

**MODE** Press the "MODE" button for longer than one second to make a selection.

**Notes:**

- Poor battery condition could result in gauges performing self test unexpectedly.**
- Some discoloration of the display may occur if the gauge is left in direct sunlight for a prolonged period. Adjusting the contrast will improve visibility.
- Certain polarized sunglasses will cause the display to become illegible.
- Use only soap and water when cleaning your MG3000 instruments. Certain chemical cleaners will damage the fog-resistant lens on your instruments.

Download the full Owner's manual at [www.FariaBeede.com/manuals](http://www.FariaBeede.com/manuals)

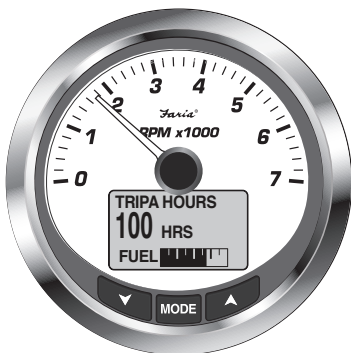


**Quick Reference Guide**

Your MG3000 Instrument Package comes equipped with factory recommended settings and displays. Basic Initialization is necessary for the system to perform properly, please reference the Owner's Manual for additional information. You can download the Owner's Manual at;

[www.FariaBeede.com/manuals](http://www.FariaBeede.com/manuals)

Note: Some functions may not be present in your version of the MG3000 program. Engine and Boat manufactures have the ability to customize the program to fit their build requirements. If you are looking for a feature listed in the Appendix and your MG does not show the function required please consult your Engine and Boat manufacturer's User manual.



**Silence Alarms**

To silence an alarm, press the **MODE** button on the tachometer. For additional information and a possible solution, reference your User's manual. If multiple alarms are present the display will automatically scroll through the current alarm(s) messages. Alarm messages will be stored internally for later troubleshooting if required. All current alarms will be shown while in Normal Mode by scrolling.

**Menu Operations**

**Scrolling - Normal Operating Mode**

▼ ▲ The "Up" or "Down" buttons will scroll through active displays.

**Making a Selection**

**MODE** Press the "MODE" button for longer than one second to make a selection.

**Exiting a Menu**

**MODE** A short press of the "MODE" button for less than 1 second will exit from a menu. 15 seconds of inactivity will exit.

**Edit Menu**

**MODE** From the "Normal" mode press the "MODE" once to view the menus.

▼ ▲ The "Up" or "Down" button will scroll through the available options.

**MODE** Press the "MODE" button for longer than one second to make a selection.

**Adding Fuel to the Fuel Tank**

**MODE** From the "Normal" mode, press the "MODE" once to view the menus.

▼ ▲ The "Up" or "Down" button will scroll through the available options to FUEL LEVEL menu.

**MODE** Press the "MODE" button for longer than one second to make a selection.

▼ ▲ Use the "Up" or "Down" button to select the Fuel tank that fuel has been added to.

**MODE** Press the "MODE" button for longer than one second to make a selection.

▼ ▲ Set tank Full or select ADD FUEL and use the "Up" or "Down" button to set the volume of Fuel that has been added to the fuel tank.

**MODE** Press the "MODE" button for longer than one second to make a selection.

Pressing and holding the UP or DOWN button will increase or decrease the amount in a more rapid fashion.

**Brightness Adjustment (TACH only)**

**MODE** From the "Normal" mode press the "MODE" button once.

▼ ▲ Scroll until "LIGHTING" is selected.

**MODE** Press the "MODE" button for longer than one second to make a selection.

Select "ADJUST DIAL" to adjust all instruments' lighting levels.

OR

Select "ADJUST LCD" to adjust the Tachometer and Speedometer's display brightness.

▼ ▲ Press the "Up" or "Down" button to increase or decrease lighting level.

**MODE** Press the "MODE" button for longer than one second to make a selection.

**Contrast Adjustment (TACH only)**

**MODE** Press the "MODE" button once.

▼ ▲ Scroll until "CONTRAST" is selected

**MODE** Press the "MODE" button for longer than one second to make a selection.

▼ ▲ Press the "Up" or "Down" button to increase or decrease the contrast in the Tachometer and Speedometer's display.

**MODE** Press the "MODE" button for longer than one second to make a selection.

**Trip Data View/Reset (TACH only)**

▼ ▲ From the "Normal" mode hold the "Up" and "Down" buttons for 1 second

▼ ▲ Scroll to "TRIP A", "TRIP B" or "SEASON"

**MODE** Press the "MODE" button for longer than one second to make a selection.

▼ ▲ Scroll to "VIEW" or "RESET DATA"

**MODE** Press the "MODE" button for longer than one second to make a selection.

**Reset Fuel Totalizer (TACH only)**

**MODE** Press the "MODE" button once.

▼ ▲ Select "RESET TFUEL"

**MODE** Press the "MODE" button for longer than one second to make a selection.

▼ ▲ Select YES to reset totalizer fuel used.

**MODE** Press the "MODE" button for longer than one second to make a selection.

**Software Revision**

**MODE** From the EDIT MENU press the "MODE" once to view the menus.

▼ ▲ The "Up" or "Down" button will scroll through the available options to select SYSTEM MENU.

**MODE** Press the "MODE" button for longer than one second to make a selection.

▼ ▲ The "Up" or "Down" button will scroll through the available options to SOFTWARE.

**MODE** Press the "MODE" button for longer than one second to make a selection.

**Notes:**

1. **Poor battery condition could result in gauges performing self test unexpectedly.**

2. Some discoloration of the display may occur if the gauge is left in direct sunlight for a prolonged period. Adjusting the contrast will improve visibility.

3. Certain polarized sunglasses will cause the display to become illegible.

4. Use only soap and water when cleaning your MG3000 instruments. Certain chemical cleaners will damage the fog-resistant lens on your instruments.

Download the full Owner's manual at [www.FariaBeede.com/manuals](http://www.FariaBeede.com/manuals)